

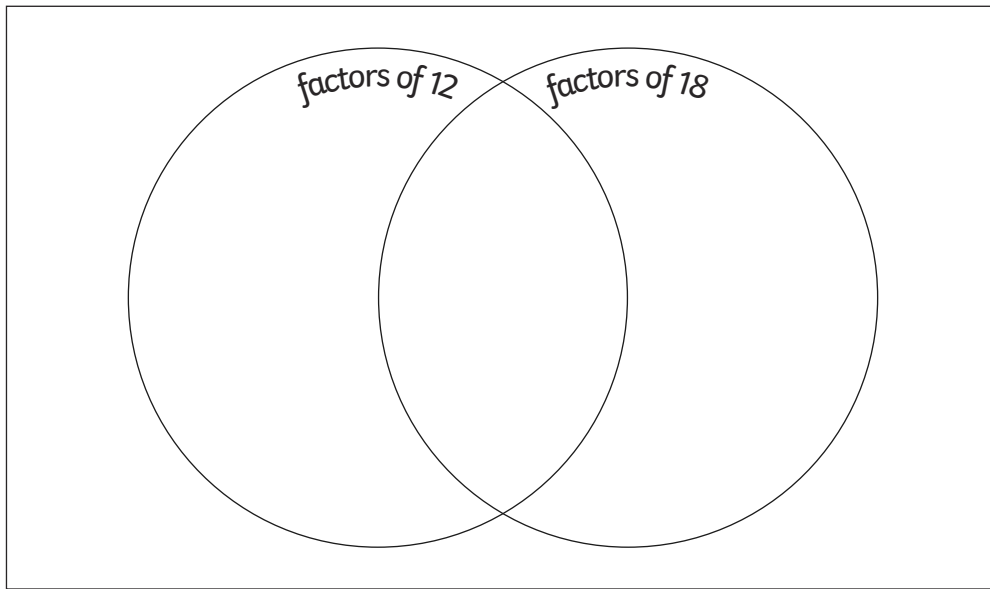


# Factors, Multiples and Prime Numbers

I can identify common factors, common multiples and prime numbers.



- 1) Use the numbers 1-18 to complete this Venn diagram:



- 2) What is the lowest common multiple for each set of numbers?

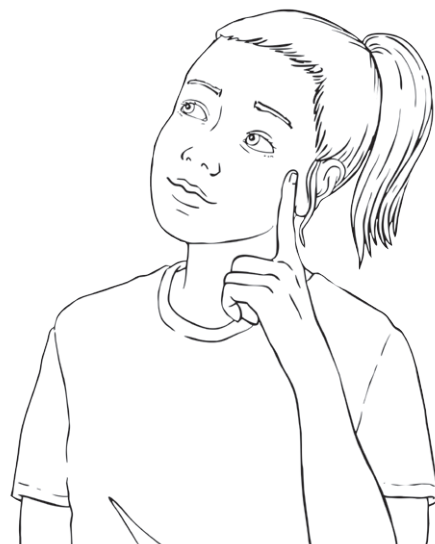
12 and 20 \_\_\_\_\_

6 and 14 \_\_\_\_\_

11 and 15 \_\_\_\_\_

- 3) Look at the numbers in the circles. Write the nearest prime number lower than the number in the left-hand boxes and the nearest prime number higher in the right-hand boxes.

<input type="text"/>	←	45	→	<input type="text"/>
<input type="text"/>	←	15	→	<input type="text"/>
<input type="text"/>	←	9	→	<input type="text"/>
<input type="text"/>	←	68	→	<input type="text"/>
<input type="text"/>	←	34	→	<input type="text"/>





# Factors, Multiples and Prime Numbers **Answers**

Question	Answer
1.	Use the numbers 1-18 to complete this Venn diagram:
2.	What is the lowest common multiple for each set of numbers?
	<p>12 and 20 <b>60</b></p> <p>6 and 14 <b>42</b></p> <p>11 and 15 <b>165</b></p>
3.	Look at the numbers in the circles. Write the nearest prime number lower than the number in the left-hand boxes and the nearest prime number higher in the right-hand boxes.