



PRIORY FIELDS
SCHOOL

Newsletter



WHINLESS DOWN
ACADEMY TRUST

Friday 6th February 2026

Year 1 Kahlo Class Enjoy a Fantastic Science Afternoon!

On Monday 26th January, Year 1 Kahlo class had a fantastic science afternoon exploring materials through a series of experiments.

We started by discussing what our items were made from and made predictions about whether we thought each one would be bendy, transparent, absorbent, or waterproof.

The experiments grew more exciting (and a little noisy!) as we tested our materials with water – and yes, some of us even got a bit wet!

Finally, we reviewed our predictions and recorded our findings. It was a brilliant way to see science in action, and the children had a wonderful time learning through hands-on exploration.

We love science!



KEY DATES

10.02.26 – Parent Coffee & Catch Up – 9:00 – 10:00

11.02.26 – Thomas Class Forest School

11.02.26 – Year 4 Swimming

12.2.26 –

PYJAMARAMA DAY!



13.2.26 – End of Term!

23.2.26 – **Start of Term 4!**

WHOLE CLASS ATTENDANCE



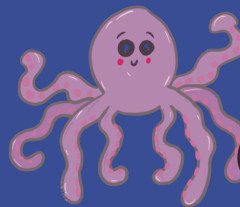
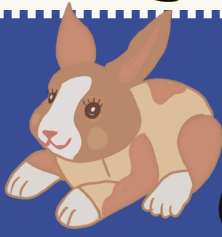
Kusama – 96.1%



Doodle – 94.8%



Kahlo – 93.3%



Emotional Well-Being Team Coffee Morning

You are invited to meet the Emotional Wellbeing Team at our Coffee Morning on **Tuesday 10th February at 9:00 - 10:00**. This is a great opportunity to find out more about who they are and how they support children's emotional wellbeing.

Who are they?

The Emotional Wellbeing Team is part of a government initiative, also known nationally as Mental Health Support Teams. They are specially trained to help children with their emotional wellbeing and mental health. Sometimes children need additional support, and the team is available to provide early help so that children can enjoy school, home life, and time with family and friends.

Who can they help?

The team supports all children in the school and works with the whole school community to promote a 'whole school approach' to emotional wellbeing. They also work with children and parents/carers through group or 1:1 sessions to address specific concerns.

How they can help:

Support includes:

Whole-school activities and workshops to promote emotional wellbeing and understanding of mental health

Group and 1:1 sessions for parents/carers, including:

Supporting children with worries and fears

Understanding a child's behaviour

Guidance on accessing additional support

The team can be contacted via the school's Emotional Wellbeing Practitioner or a member of staff. They are also available by email: ewtandestenquiries@nelft.nhs.uk (please note emails are only answered during office hours).

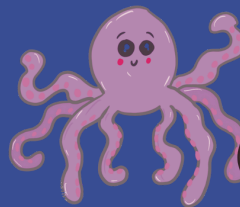


Getting help at school from the
Emotional Wellbeing Team

Milkshake Monday



**A huge well done to all our
Milkshake Monday
Winners & our Wonderful
Writers this week! Keep
shining and showing our
school values every day!**



E-Safety TikTok

You must be over 13 years of age to use TikTok. TikTok is a social media platform for sharing and watching short video clips. If your child is using TikTok then make sure appropriate security / privacy settings are applied.

Account set up

It is important that your child enters their real date of birth as accounts are tailored by age e.g., Direct Messaging is disabled for accounts aged 13-15. In addition, advertisements are tailored by age. By default, accounts for people under 16 are set to private.

Family Pairing

Family Pairing allows you to link your own account to your child's account. You can then set controls such as restricted mode or tailor your child's 'For You' feed by selecting keywords that TikTok will use to filter out posts.

What do I need to be aware of?

- Inappropriate content and themes: whilst against guidelines, explicit and inappropriate content can be found on this platform, for example nudity/sexual content and hate speech. Some of the songs available to lip sync to may contain inappropriate lyrics/themes.
- Challenges: We often see viral challenges on social media, some of which can be risky/dangerous. Sadly, there are reports that children have died whilst attempting online challenges.

Huge Thank You to Dover Sharks who have offered girls rugby sessions this week - great to see so many of our girls getting involved with this!

